



BEDROOMS: 5

BATHROOMS: 5 FULL/ 1 HALF

4264 FINISHED SQUARE FEET

FRONT RENDERING

SCALE: N.T.S.

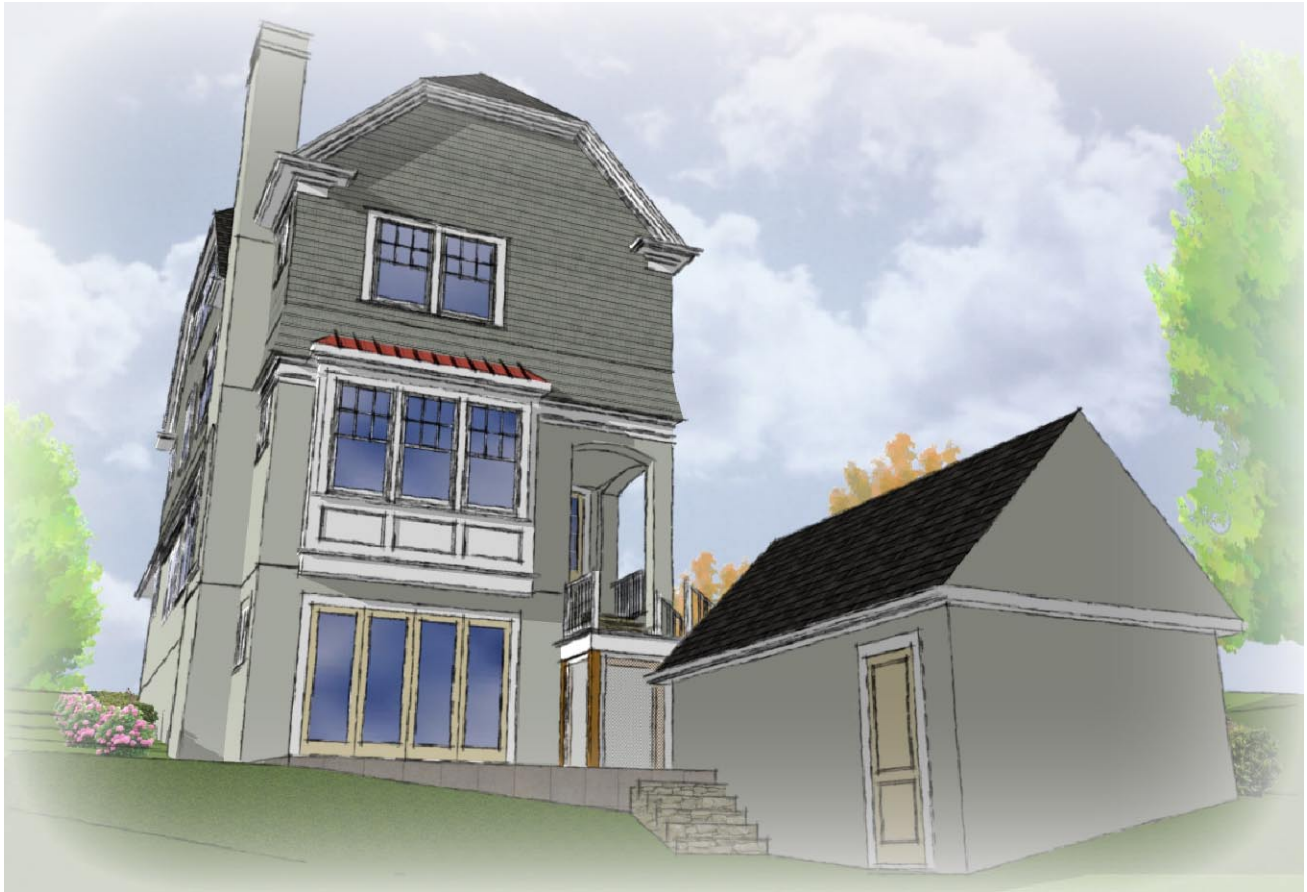
*Note: These drawings are for marketing purposes only. Exterior colors & interior floor plans & sizes are subject to change.

5712 BROAD BRANCH RD, NW

WASHINGTON, DC

COPYRIGHT 2011, GTM ARCHITECTS, INC.





*Note: These drawings are for marketing purposes only. Exterior colors & interior floor plans & sizes are subject to change.

REAR RENDERING

SCALE: N.T.S.

5712 BROAD BRANCH RD, NW

WASHINGTON, DC

COPYRIGHT 2011, GTM ARCHITECTS, INC.





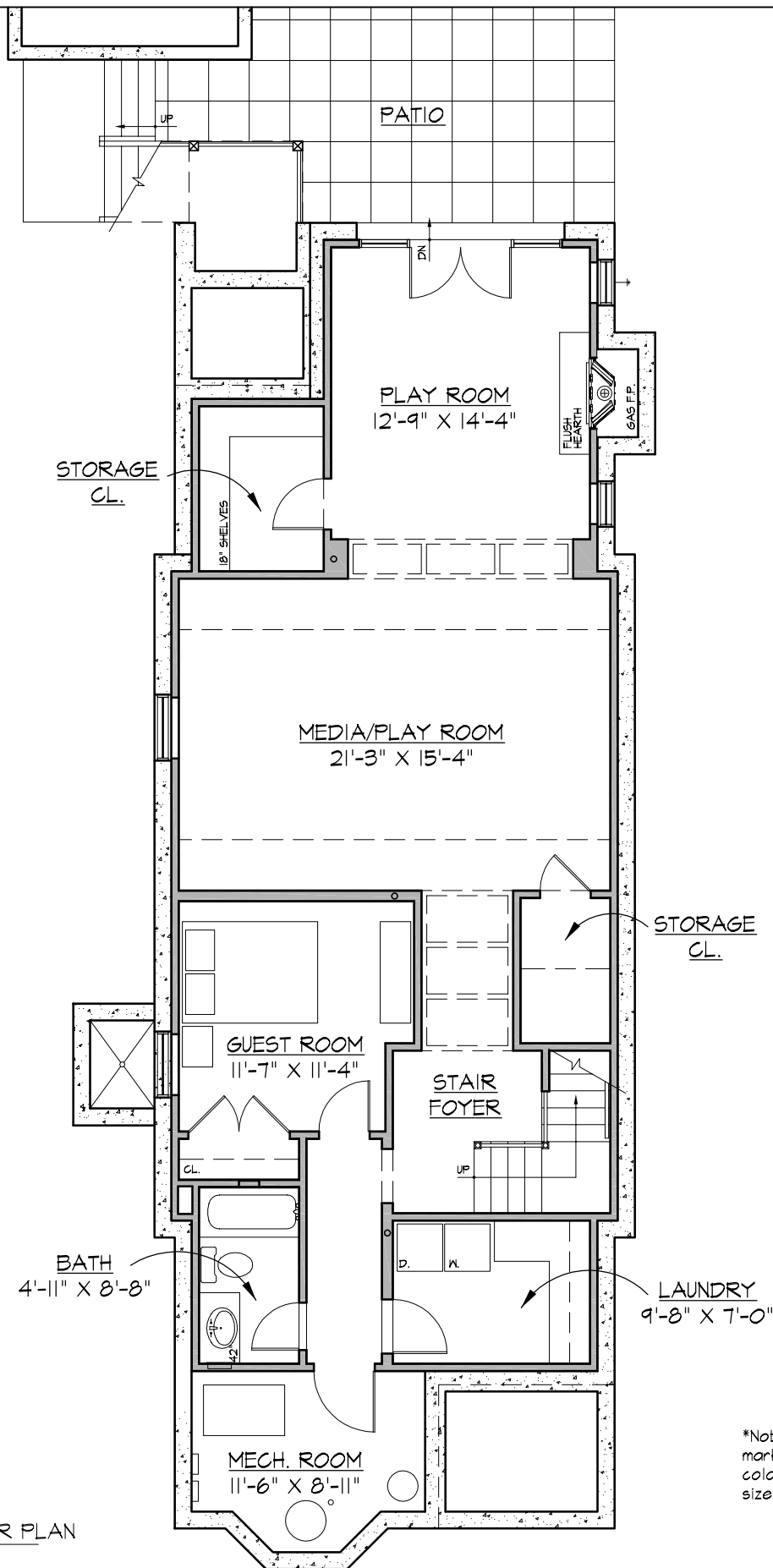
*Note: These drawings are for marketing purposes only. Exterior colors & interior floor plans & sizes are subject to change.

LEFT/REAR RENDERING
SCALE: N.T.S.

5712 BROAD BRANCH RD, NW
WASHINGTON, DC

COPYRIGHT 2011, GTM ARCHITECTS, INC.


G T M ARCHITECTS
7735 OLD GEORGETOWN ROAD
SUITE 700
BETHESDA, MD 20814
(240)333-2000
(240)333-2001 FAX



*Note: These drawings are for marketing purposes only. Exterior colors & interior floor plans & sizes are subject to change.

BASEMENT FLOOR PLAN
SCALE: 1/8" = 1'-0"

5712 BROAD BRANCH RD, NW

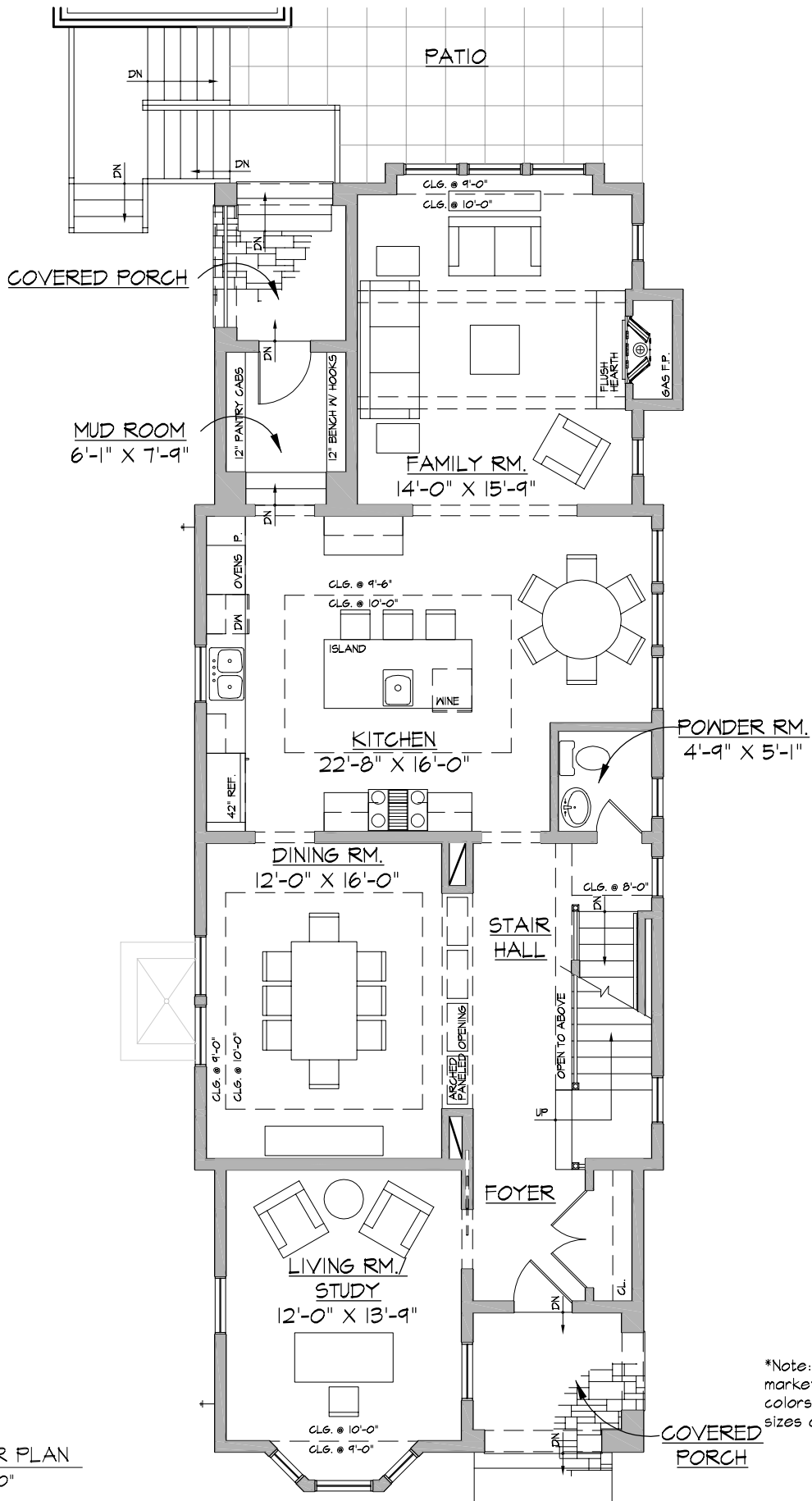
WASHINGTON, DC

1,267 SF FINISHED

COPYRIGHT 2011, GTM ARCHITECTS, INC.

GTM ARCHITECTS

7735 OLD GEORGETOWN ROAD
SUITE 700
BETHESDA, MD 20814
(240)333-2000
(240)333-2001 FAX



FIRST FLOOR PLAN
SCALE: 1/8" = 1'-0"

*Note: These drawings are for marketing purposes only. Exterior colors & interior floor plans & sizes are subject to change.

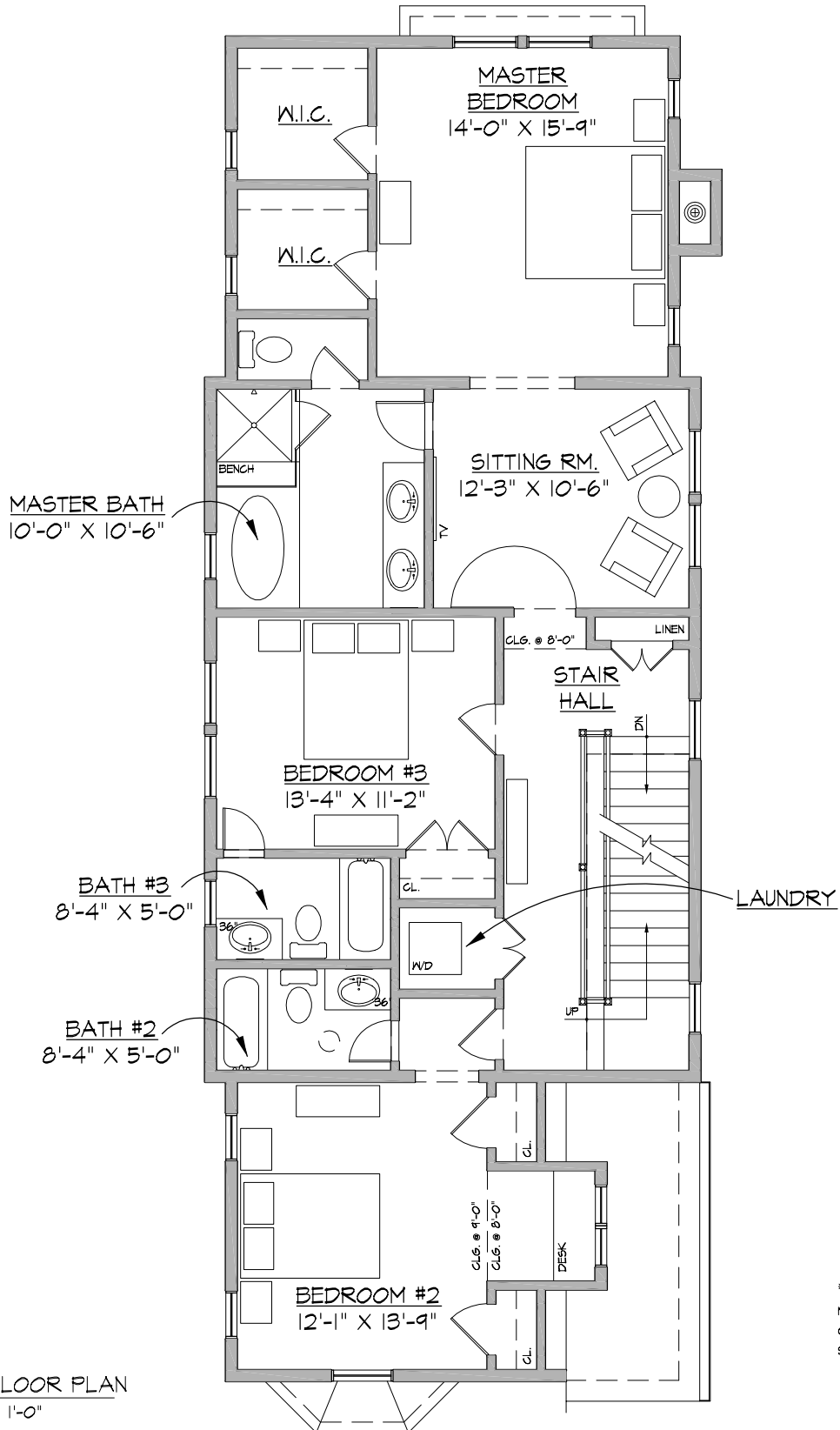
5712 BROAD BRANCH RD, NW

WASHINGTON, DC

1,451 SF

COPYRIGHT 2011, GTM ARCHITECTS, INC.

GTM ARCHITECTS
 7735 OLD GEORGETOWN ROAD
 SUITE 700
 BETHESDA, MD 20814
 (240)333-2000
 (240)333-2001 FAX



SECOND FLOOR PLAN
SCALE: 1/8" = 1'-0"

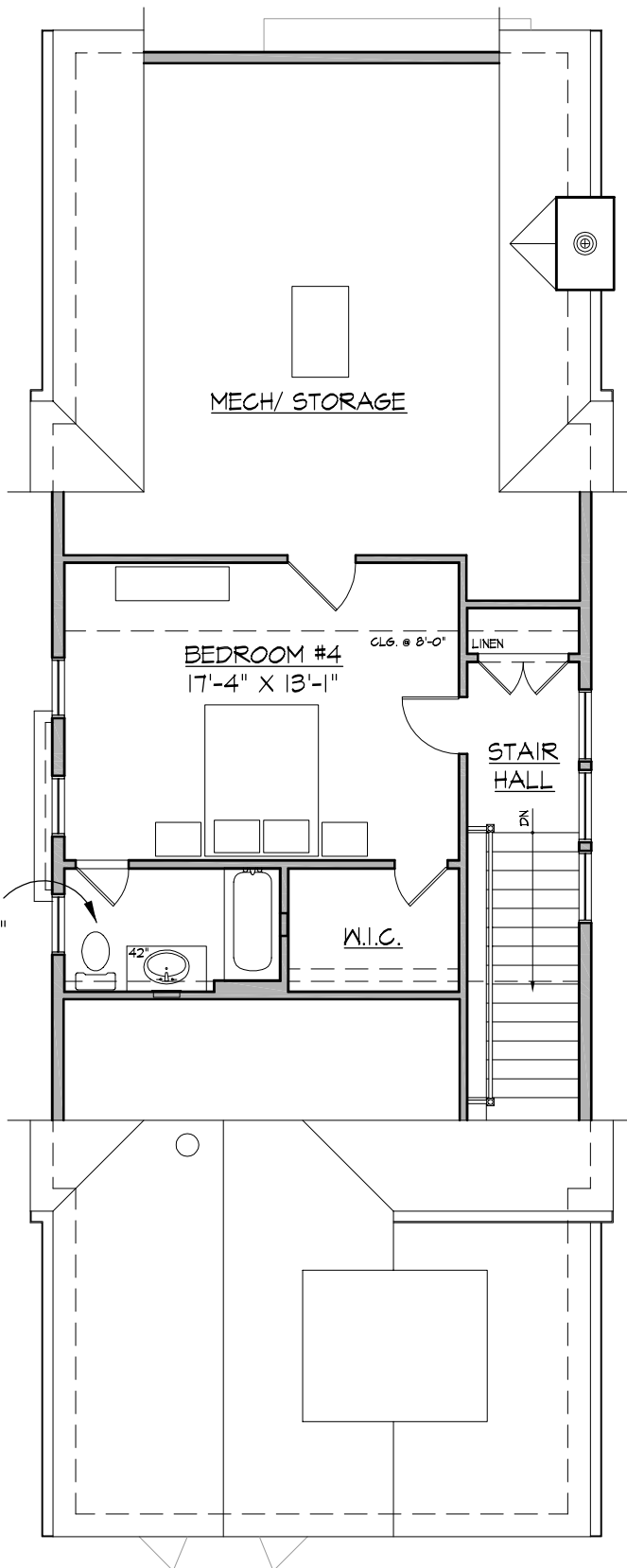
*Note: These drawings are for marketing purposes only. Exterior colors & interior floor plans & sizes are subject to change.

5712 BROAD BRANCH RD, NW
WASHINGTON, DC

1,451 SF

COPYRIGHT 2011, GTM ARCHITECTS, INC.

GTM ARCHITECTS
7735 OLD GEORGETOWN ROAD
SUITE 700
BETHESDA, MD 20814
(240)333-2000
(240)333-2001 FAX



THIRD FLOOR PLAN
SCALE: 1/8" = 1'-0"

1,451 SF

5712 BROAD BRANCH RD, NW
WASHINGTON, DC

COPYRIGHT 2011, GTM ARCHITECTS, INC.

*Note: These drawings are for marketing purposes only. Exterior colors & interior floor plans & sizes are subject to change.

GTM ARCHITECTS
7735 OLD GEORGETOWN ROAD
SUITE 700
BETHESDA, MD 20814
(240)333-2000
(240)333-2001 FAX